

GFRP Apparatus Case

Certificate Number: PA05/06490



Key Features

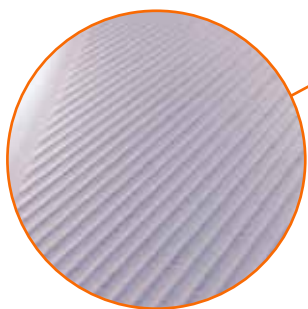
- Design allows for multiple case assemblies. ie: Loc +1
- Dielectric strength - 77kV
(Not to be used in OLE dropzone)
- Available as a pre-assembled case or a flat pack assembly kit for site re-skinning
- Fire rating material - Class 1/class 0 resin is used in conjunction with high glass content, giving class 1 specification. The type of resin used is manufactured both in the UK and Germany.
- A gel coat outer skin with a technical Glass Fibre fabric on the inner and outer faces and a technical polyurethane core
- Perfect for use in extremely harsh environments including coastal locations Due to the nature of the material it will never rust!
- Fully compatible with NR approved pre-cast bases

Technical Information

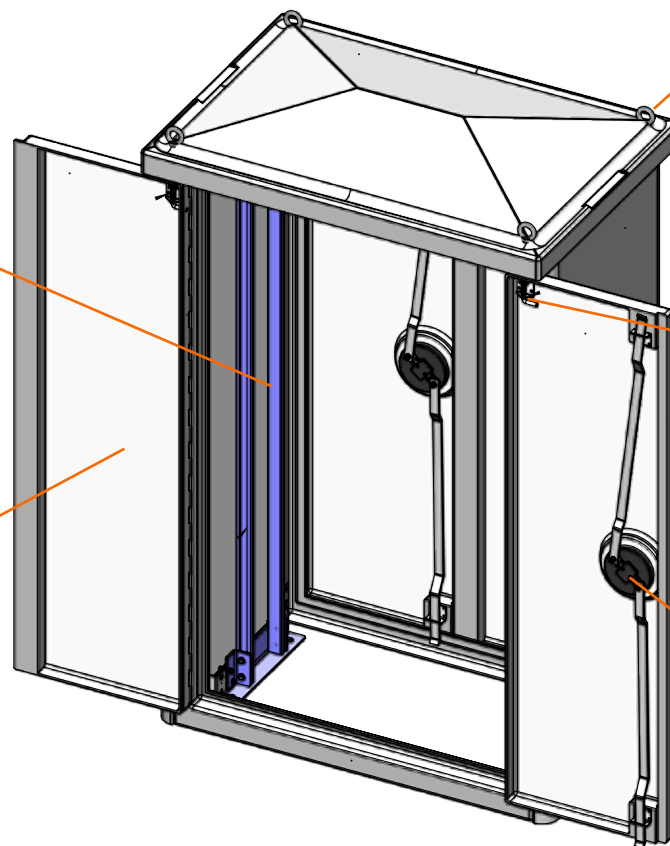
- General arrangement compliant to BRS SM 850
- Signalling equipment framework compliant to BRS SM 440
- IP54 Nominal
- IK10 (to BS EN 62262)
- Lightweight: Full Loc - 138Kg
Half Loc - 85Kg
- EN 50125 Environmental specification
- Low thermal coefficient. 0.04W/m K compared to steel 50.4W/m K
- Service life - 40+ years
- Vented canopy
- Operating temperature: -40°C to +70°C



Signalling equipment framework compliant to BRS SM 440



Bespoke texture on doors and end panels to reduce possible reflection and aid in self cleaning



M12 Lifting Eyebolts. These can be removed once loc case is in position

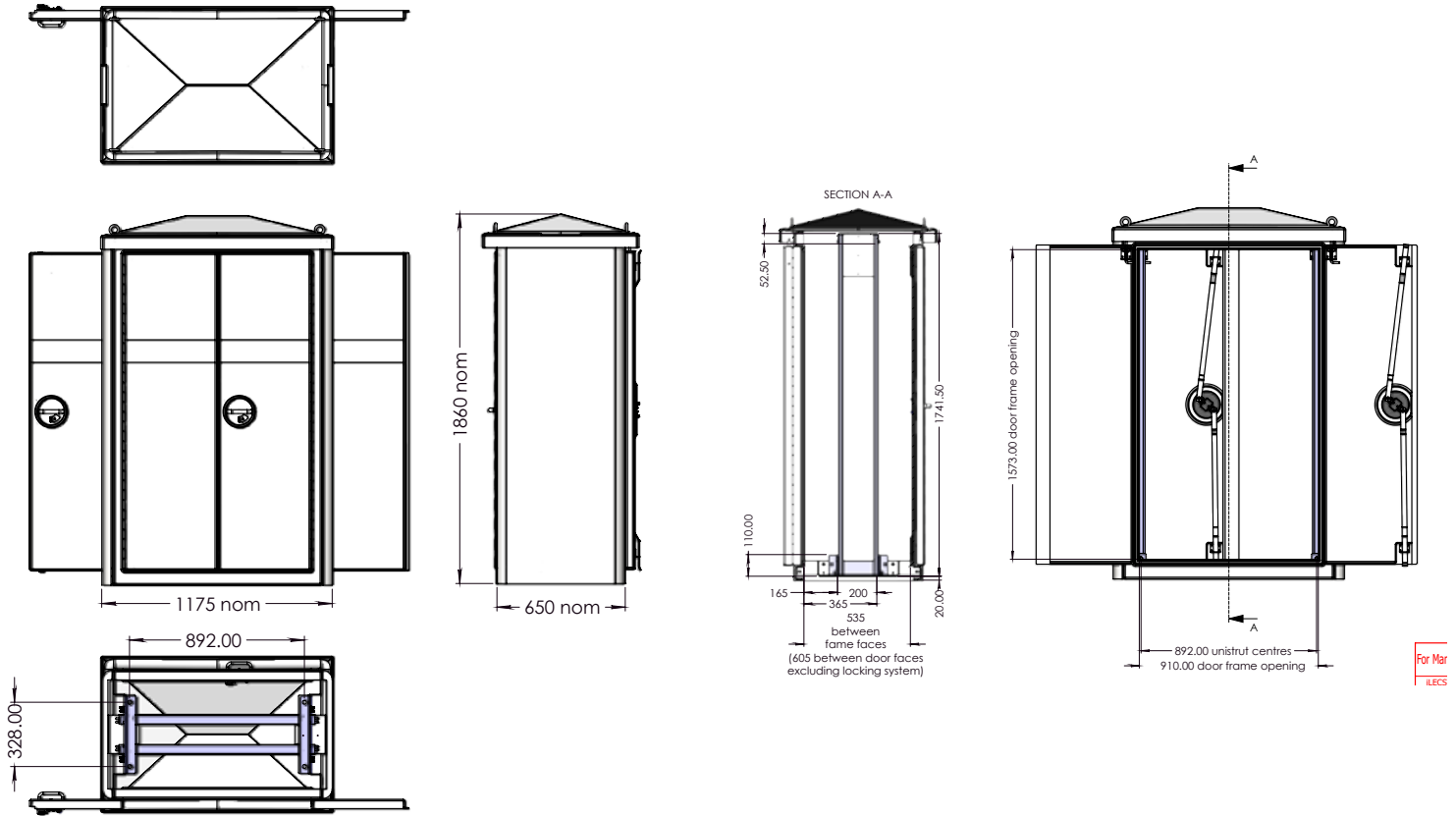


Door stay mechanism. Can be locked in place at both 90° and 180°

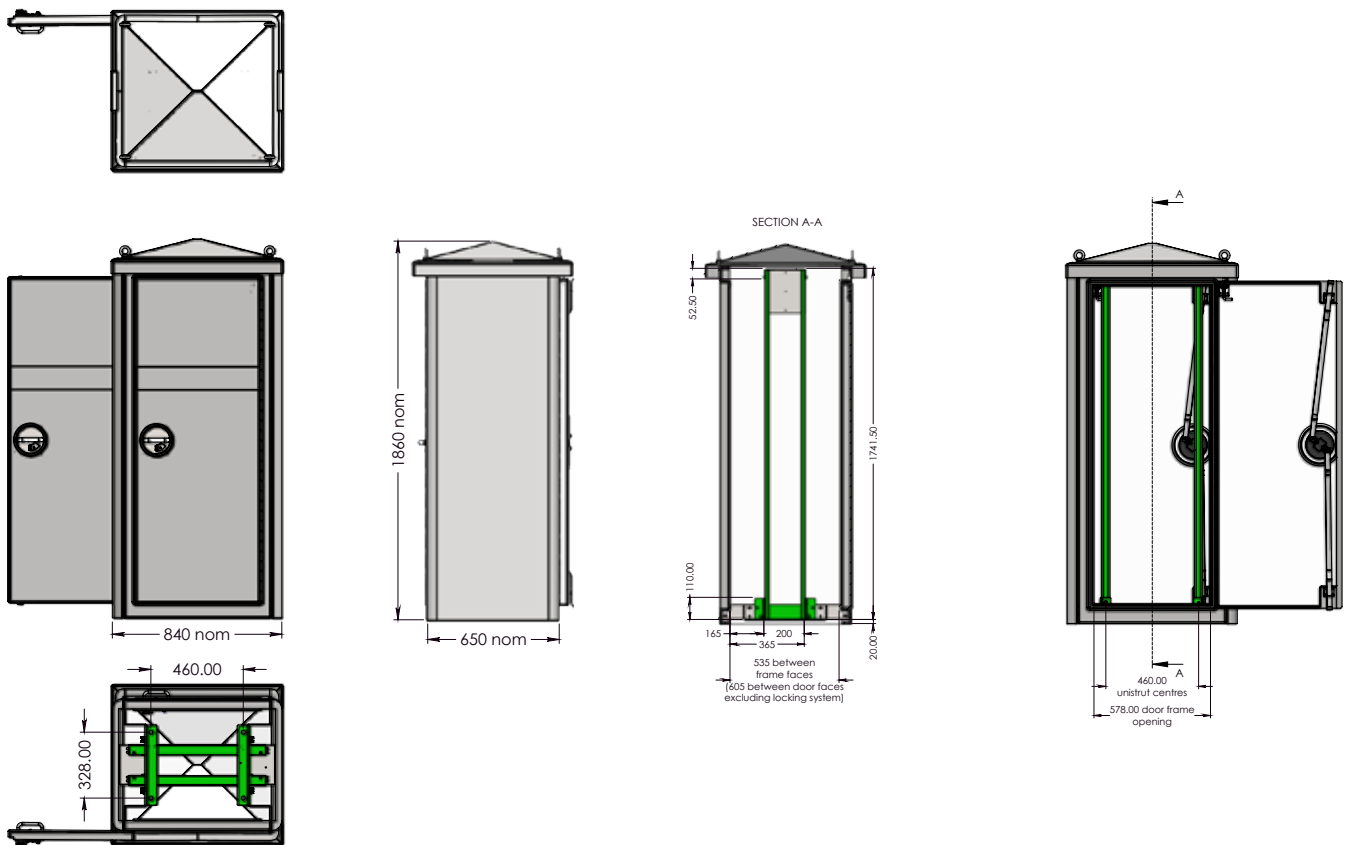


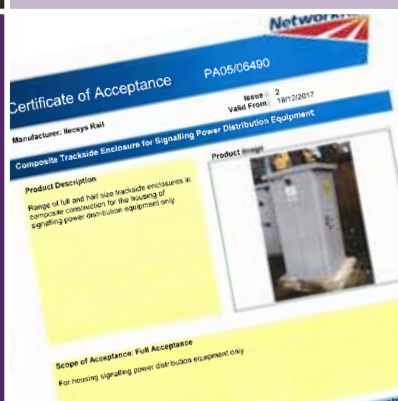
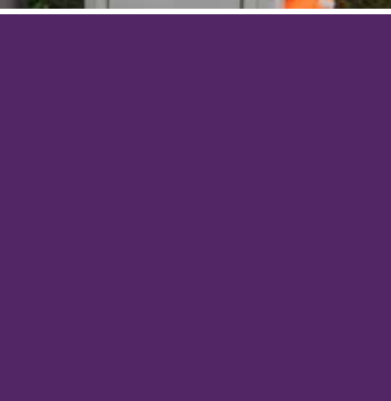
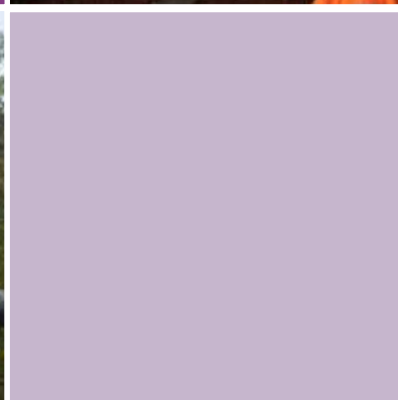
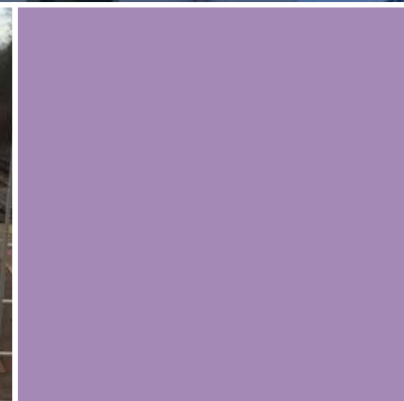
Two point locking mechanism. Can be secured using padlock

Full Location Case



Half Location Case





t: 01442 828387

f: 01442 828399

e-mail: enquiry@ilecsysrail.co.uk

1 Kites Park • Summerleys Road • Princes Risborough • Buckinghamshire • HP27 9PX

