

A New Generation of DNO

An alternative way to deliver

Signalling Power
DNO Cubicle

A Modern Alternative

The new generation of DNO Cubicles



Signalling Power
DNO Cubicle



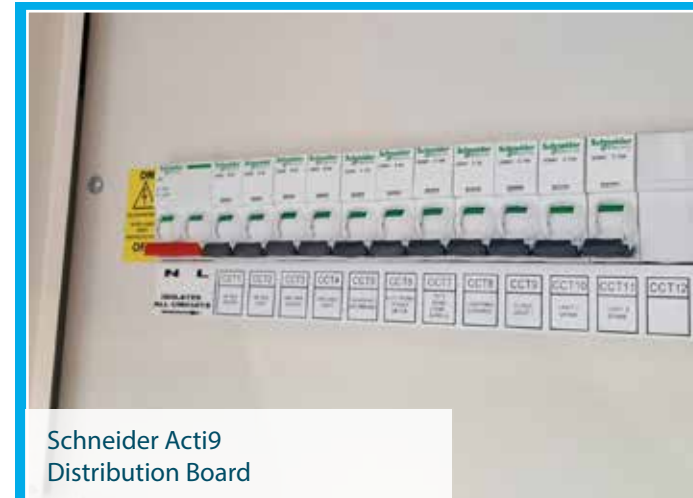
Single Sided and Double Sided
Cubicle Arrangements Available

Current Distribution Network Operator (DNO) cubicles largely employ distribution switchgear equipment based on sheet steel / cast iron enclosures which are largely unchanged since the 1960's.

In support of the evolving signalling power architecture, iLECSYS Rail have developed a new generation of DNO enclosures for the modern, digital world, utilising contemporary equipment and modular composite enclosures. Due to the modularity of the system, DNO cubicles can be designed and built to the users exact requirements without compromise. This enables more optimised enclosure sizing and overall product costings.

Key benefits include:

- **Industry standard approved GRP enclosures - Side by side and back to back configurations available.**
- **Facilities for DNO metering.**
- **Site specific switchgear configuration and labelling.**
- **Main isolator and full earthing facilities.**
- **Domestic lighting and heating.**
- **Intelligent power meter and CT module.**
- **Changeover facilities for backup power supplies.**
- **Composite switchgear / distribution enclosures with clear lids.**
- **Easier and quicker maintenance inspections.**
- **Thermal camera monitoring of connections and terminations without removing module covers.**
- **Three phase and single phase busbar chamber options.**
- **Backup generator connection point.**
- **TVSS Surge protection available.**
- **Cost effective solution.**



Schneider Acti9
Distribution Board



ABB Manual Changeover Switch for
Outgoing Supply



ABB Multi Function Meter



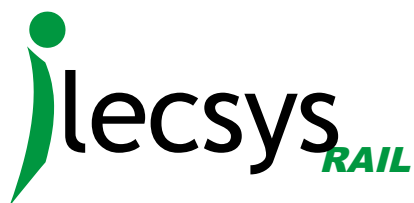
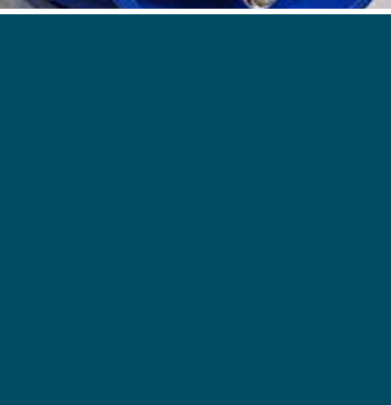
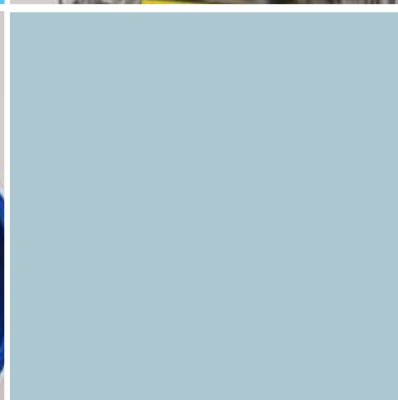
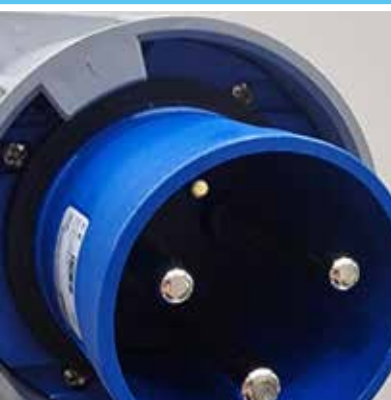
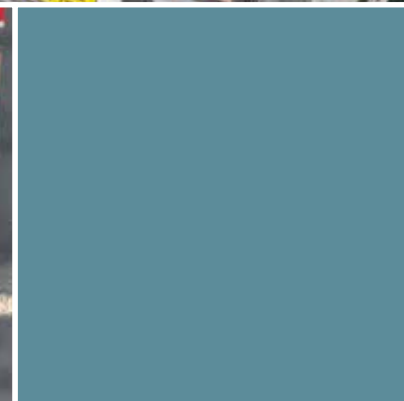
Supply Indicator Boxes Allow Visual
Indicator of Available Supplies



ABB Fuse Switches with fully
Customisable Ident Labels



PVC Solid Wall Trunking with
Outgoing Galv Trunking



t: 01844 397300

f: 01442 828399

e-mail: enquiry@ilecsysrail.co.uk

1 Kites Park • Summerleys Road • Princes Risborough • Buckinghamshire • HP27 9PX

